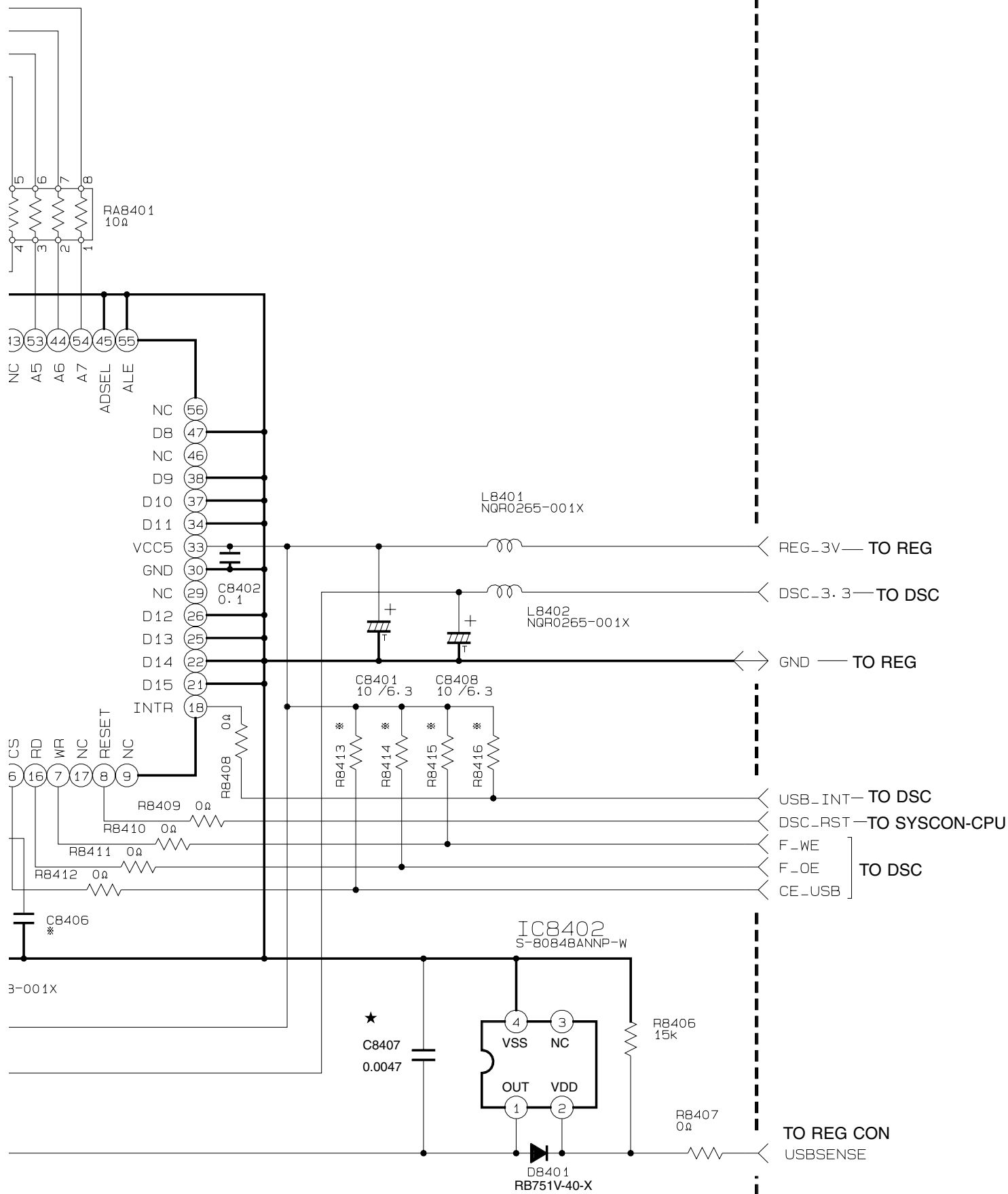


NOTE 1. How to find the page showing the continuative schematic diagram.
 Example) To SYSCON : Refer to the GR-DVP3U service manual (No. 86628).
 To SYSCON : Refer to this service manual.

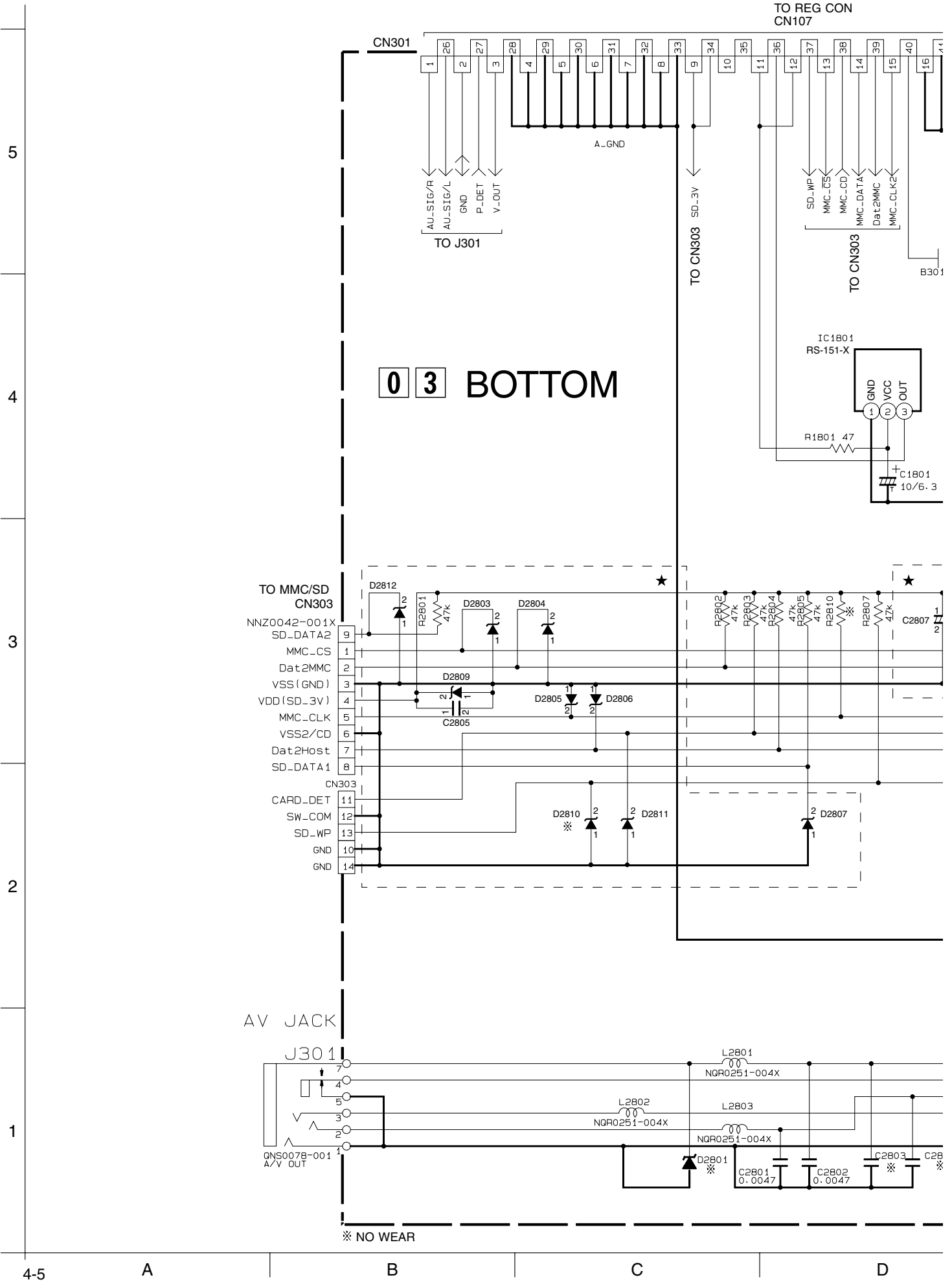
2. The mark ★ means modified points.

3. When ordering parts, be sure to order according to the Part Number indicated in the Parts List.



y30146001a_rev0.1

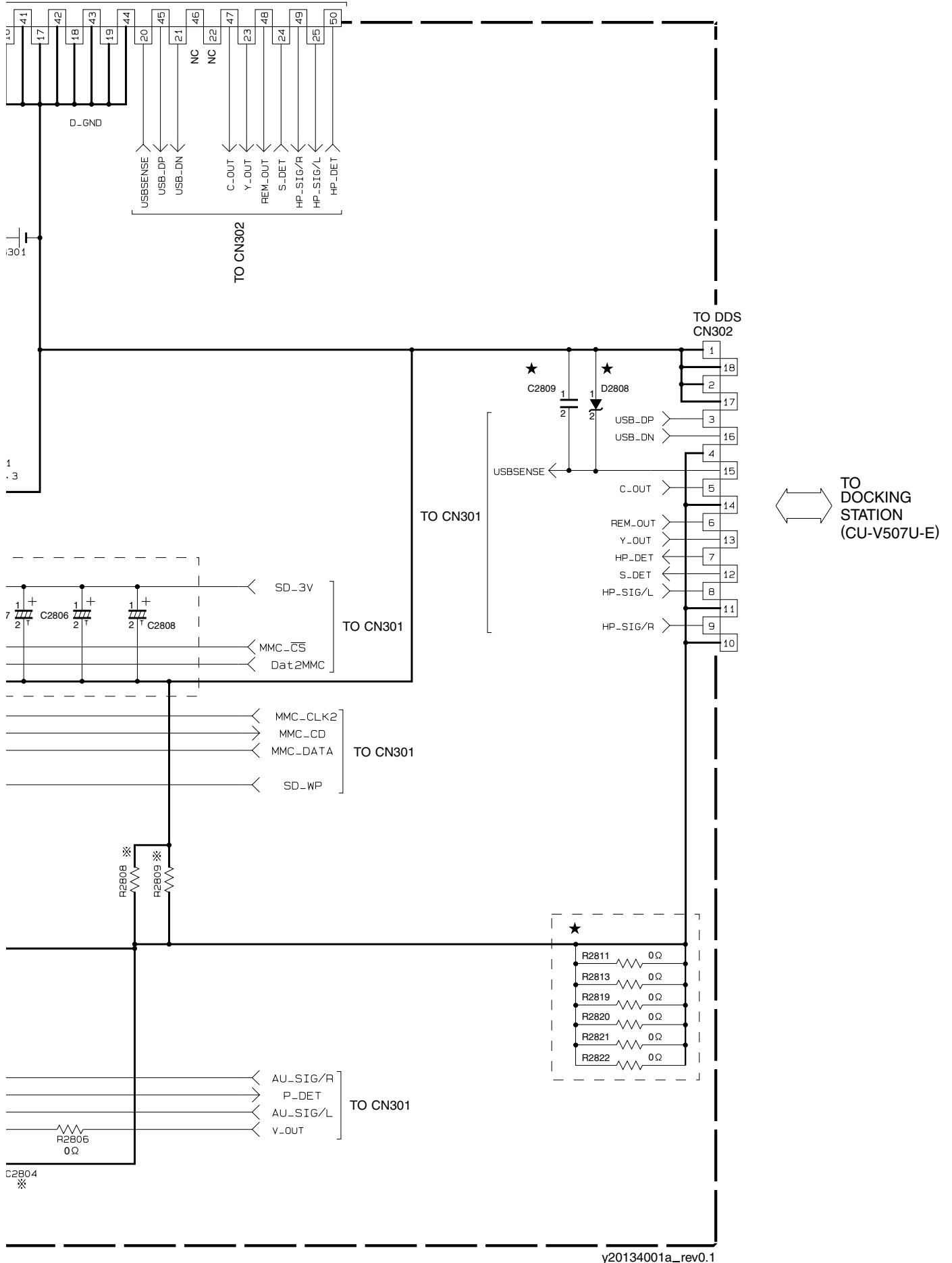
4.3 BOTTOM SCHEMATIC DIAGRAM



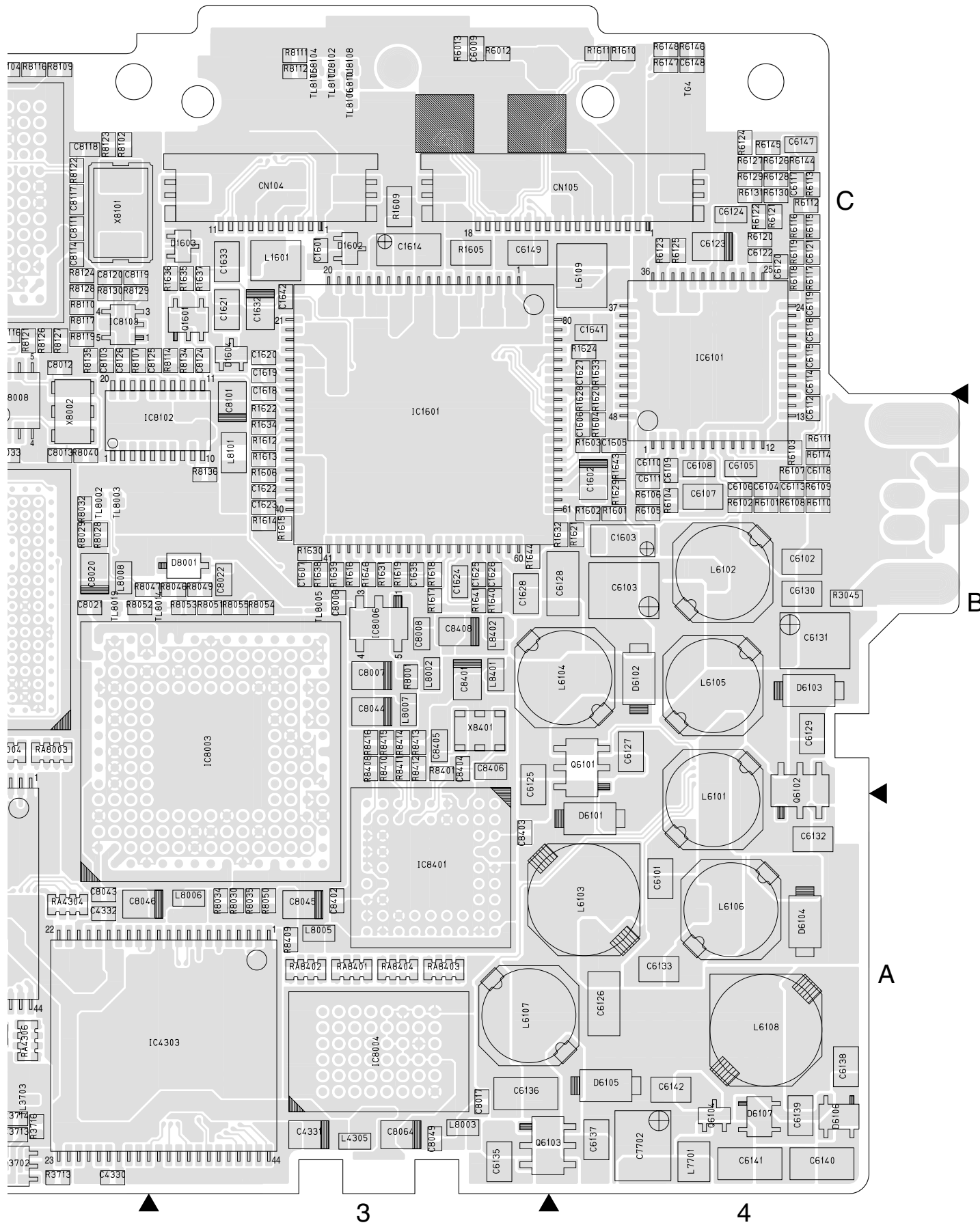
NOTE 1. How to find the page showing the continuative schematic diagram.
 Example) To SYSCON : Refer to the GR-DVP3U service manual (No. 86628).
 To SYSCON : Refer to this service manual.

2. The mark ★ means modified points.

3. When ordering parts, be sure to order according to the Part Number indicated in the Parts List.



y20134001a_rev0.1



COMPONENT PARTS LOCATION GUIDE <MAIN/YB10327-01-03>

(1/2)

REF.NO.	LOCATION	REF.NO.	LOCATION	REF.NO.	LOCATION	REF.NO.	LOCATION	REF.NO.	LOCATION	REF.NO.	LOCATION	REF.NO.	LOCATION	REF.NO.	LOCATION	
CAPACITOR																
C1004	B C 2C	C3020	A C 3B	C4202	B C 1A	C6001	A C 4B	C7432	A C 1B	C8114	B C 2C	IC3003	A C 3B	L6105	B C 4B	
C1006	B C 1C	C3021	A C 3B	C4203	B C 1A	C6002	A C 4A	C7433	A C 1B	C8115	B C 2C	IC3004	A C 2B	L6106	B C 4A	
C1007	A C 1C	C3022	A C 3C	C4204	B C 1A	C6003	A C 4A	C7434	A C 1B	C8116	B C 2C	IC3005	A C 4C	L6107	B C 3A	
C1011	B C 1C	C3023	A C 3B	C4205	B C 1A	C6004	A C 4A	C7701	A C 2A	C8117	B C 2C	IC3006	A C 2B	L6108	B C 4C	
C1013	B C 1C	C3024	A C 3B	C4206	B C 1A	C6005	A C 4A	C7702	B C 2A	C8118	B C 2C	IC3501	A C 2C	L6109	B C 4A	
C1015	B C 1C	C3025	A C 3B	C4207	B C 1A	C6006	A C 4A	C7801	A C 2B	C8119	B C 2C	IC3701	B C 2A	L7401	A C 1B	
C1016	B C 1C	C3026	A C 4B	C4208	B C 1A	C6007	A C 4A	C7802	A C 3A	C8120	B C 2C	IC4201	B C 1A	L7402	A C 2B	
C1017	B C 1C	C3027	A C 4C	C4209	B C 1A	C6008	A C 4A	C7803	A C 3A	C8121	B C 2C	IC4202	B C 1A	L7403	A C 2B	
C1018	B C 1C	C3028	A C 4B	C4210	B C 1A	C6009	B C 3C	C7804	A C 3A	C8122	B C 2C	IC4301	B C 1A	L7404	A C 1B	
C1019	B C 1C	C3029	A C 4C	C4211	B C 1A	C6101	B C 4A	C7805	A C 3A	C8123	B C 2C	IC4302	B C 2A	L7405	A C 2B	
C1023	B C 1B	C3030	A C 3C	C4212	B C 1A	C6102	B C 4B	C7806	A C 3A	C8124	B C 3C	IC4303	B C 3A	L7701	A C 4A	
C1026	B C 2C	C3031	A C 3C	C4213	B C 1A	C6103	B C 4B	C7807	A C 3A	C8125	B C 3C	IC4304	A C 4A	L7801	A C 2A	
C1027	A C 1C	C3032	A C 3C	C4214	B C 1A	C6104	B C 4B	C7808	A C 3A	C8126	B C 2C	IC5501	A C 1A	L7802	A C 2A	
C1028	A C 1C	C3033	A C 3C	C4215	B C 1A	C6105	B C 4B	C7809	A C 3A	C8401	B C 3B	IC6001	A C 4A	L7803	A C 3A	
C1029	A C 1C	C3034	A C 3C	C4216	B C 1A	C6106	B C 4B	C7810	A C 3A	C8402	B C 3A	IC6002	A C 4A	L7804	A C 2A	
C1030	A C 1C	C3035	A C 3C	C4301	B C 1B	C6107	B C 4B	C7811	A C 3A	C8403	B C 3A	IC6003	A C 4A	L7805	A C 2A	
C1031	B C 1C	C3036	A C 3B	C4302	B C 1B	C6108	B C 4B	C7812	A C 3A	C8404	B C 3B	IC6004	A C 4A	L8001	A C 2B	
C1033	B C 1C	C3037	A C 3B	C4303	B C 1B	C6109	B C 4B	C7813	A C 3A	C8405	B C 3B	IC6101	B C 4C	L8002	B C 3B	
C1034	B C 1C	C3038	A C 3C	C4304	B C 1A	C6110	B C 4B	C7814	A C 3A	C8406	B C 3B	IC7402	A C 2B	L8003	B C 3A	
C1036	B C 2C	C3039	A C 3C	C4305	B C 1B	C6111	B C 4B	C7815	A C 3A	C8407	A C 4B	IC7801	A C 2A	L8005	B C 3A	
C1037	B C 1B	C3040	A C 3C	C4306	B C 1A	C6112	B C 4B	C7816	A C 3A	C8408	B C 3B	IC7802	A C 2A	L8006	B C 3A	
C1038	B C 1C	C3041	A C 3C	C4307	B C 1B	C6113	B C 4B	C7817	A C 2A	CONNECTOR			IC7804	A C 3A	L8007	B C 3B
C1101	A C 1C	C3042	A C 3C	C4308	B C 1B	C6114	B C 4C	C7818	A C 2A	CN101	A C 2C	IC8001	B C 2B	L8008	B C 2B	
C1102	A C 2C	C3043	A C 3C	C4309	A C 4A	C6115	B C 4C	C7819	A C 2A	CN102	B C 1C	IC8002	B C 1B	L8010	B C 2B	
C1103	A C 2C	C3044	A C 3B	C4310	A C 4A	C6116	B C 4C	C7820	A C 2A	CN103	A C 1C	IC8003	B C 3B	L8011	B C 1B	
C1111	A C 1C	C3045	A C 4C	C4311	A C 4A	C6117	B C 4C	C7821	A C 2A	CN104	B C 3C	IC8004	B C 3A	L8101	B C 2B	
C1112	A C 1C	C3046	A C 3B	C4312	B C 1A	C6118	B C 4B	C7822	A C 2A	CN105	B C 4C	IC8005	B C 2C	L8102	B C 3C	
C1113	A C 1C	C3047	A C 3C	C4313	B C 1A	C6119	B C 4C	C7823	A C 2A	CN106	A C 4B	IC8006	A C 3B	L8401	B C 3B	
C1401	A C 3B	C3048	A C 4B	C4314	B C 1A	C6120	B C 4C	C7824	A C 2A	CN107	A C 4A	IC8007	A C 2B	L8402	B C 3B	
C1402	A C 3B	C3049	A C 3B	C4315	B C 2A	C6121	B C 4C	C7825	A C 2B	CN108	A C 4B	IC8008	B C 2B	TRANSISTOR		
C1403	A C 3B	C3050	A C 3B	C4316	B C 1A	C6122	B C 4C	C7826	A C 2A	CN109	A C 1C	IC8009	B C 2B	Q1001	B C 1C	
C1404	A C 3B	C3051	A C 3B	C4317	B C 1A	C6123	B C 4C	C7827	A C 2B	CN110	A C 1B	IC8010	B C 2B	Q1002	B C 1C	
C1405	A C 4B	C3052	A C 3B	C4318	B C 1A	C6124	B C 4C	C7828	A C 2A	CN111	A C 1A	IC8011	B C 2B	Q1003	A C 1C	
C1406	A C 3A	C3053	A C 3B	C4318	B C 1A	C6125	B C 3B	C7829	A C 2A	CN112	A C 1A	IC8012	B C 2C	Q1004	A C 1C	
C1407	A C 4B	C3054	A C 4B	C4320	B C 1A	C6126	B C 4A	C7830	A C 3A	CN113	A C 2A	IC8101	B C 2C	Q1006	A C 1C	
C1408	A C 4B	C3055	A C 4B	C4321	B C 1A	C6127	B C 4B	C7831	A C 2A	CN114	A C 3A	IC8102	B C 3B	Q1007	A C 1C	
C1414	A C 3B	C3056	A C 3B	C4322	B C 1A	C6128	B C 4B	C7832	A C 2A	DIODE			IC8103	B C 2C	Q1401	A C 3A
C1415	A C 3B	C3060	A C 2B	C4323	B C 1B	C6129	B C 4B	C7833	A C 3B	D1001	B C 1C	IC8401	B C 3A	Q1402	A C 4B	
C1416	A C 4B	C3061	A C 2B	C4324	B C 1B	C6130	B C 4B	C7836	A C 2B	D1002	A C 1C	IC8402	A C 4B	Q1403	A C 4B	
C1417	A C 3B	C3062	A C 2B	C4325	B C 1B	C6131	B C 4B	C7837	A C 2A	D1602	B C 3C	COIL			Q1601	B C 3C
C1418	A C 3B	C3063	A C 3B	C4326	B C 1B	C6132	B C 4A	C7838	A C 3B	D1603	B C 3C	L1002	A C 1C	Q2701	A C 3A	
C1419	A C 3B	C3065	A C 3C	C4327	B C 1B	C6133	B C 4A	C7839	A C 2A	D1604	B C 3C	L1101	A C 1C	Q2702	A C 4A	
C1420	A C 3B	C3501	A C 2B	C4328	B C 1B	C6135	B C 3A	C7841	A C 2A	D2701	A C 4A	L1401	A C 4B	Q3701	B C 2A	
C1601	B C 3C	C3502	A C 2B	C4329	B C 1B	C6136	B C 3A	C7842	A C 2A	D2702	A C 4A	L1601	B C 3C	Q3702	B C 2A	
C1602	B C 4B	C3503	A C 2C	C4330	B C 2A	C6137	B C 4A	C7843	A C 2A	D2703	A C 3A	L2701	A C 4A	Q4301	B C 1A	
C1603	B C 4B	C3504	A C 2C	C4331	B C 3A	C6138	B C 4A	C8001	B C 1B	D3001	A C 3A	L3001	A C 4C	Q4303	B C 1A	
C1605	B C 4B	C3505	A C 2C	C4332	B C 2A	C6139	B C 4A	C8003	B C 1B	D3002	A C 3B	L3002	A C 4C	Q6001	A C 4A	
C1606	B C 4B	C3506	A C 2C	C4333	B C 2A	C6140	B C 4A	C8006	B C 3B	D3003	A C 3C	L3003	A C 4C	Q6002	A C 4A	
C1607	B C 3B	C3507	A C 2C	C4334	B C 2B	C6141	B C 4A	C8007	B C 3B	D5501	A C 2A	L3004	A C 4C	Q6003	A C 4A	
C1614	B C 3C	C3508	A C 2C	C4335	B C 1A	C6142	B C 4A	C8008	B C 3B	D6001	A C 4A	L3005	A C 3C	Q6004	A C 4B	
C1618	B C 3C	C3509	A C 2C	C4336	B C 1B	C6143	A C 4A	C8009	A C 3B	D6002	A C 4A	L3006	A C 4B	Q6005	A C 4B	
C1619	B C 3C	C3510	A C 2C	C4337	B C 1A	C6144	A C 4A	C8010	A C 3B	D6101	B C 4A	L3007	A C 3B	Q6101	B C 4B	
C1620	B C 3C	C3511	A C 2C	C4338	B C 1B	C6145	A C 4A	C8011	A C 2B	D6102	B C 4B	L3008	A C 3C	Q6102	B C 4B	
C1621	B C 3C	C3512	A C 3C	C4339	B C 1A	C6147	B C 4C	C8012	B C 2B	D6103	B C 4B	L3009	A C 3C	Q6103	B C 3A	
C1622	B C 3B	C3513	A C 3C	C4340	B C 1B	C6148	B C 4C	C8013	B C 2B	D6104	B C 4A	L3010	A C 4B	Q6104	B C 4A	
C1623	B C 3B	C3514	A C 3C	C4341	B C 1A	C6149	B C 3C	C8017	B C 3A	D6105	B C 4A	L3011	A C 4B	Q6105	A C 4A	
C1624	B C 3B	C3515	A C 3C	C4342	B C 1A	C7401	A C 1B	C8020	B C 2B	D6106	B C 4A	L3012	A C 4B	Q6106	A C 4A	
C1625	B C 3B	C3516	A C 3C	C4343	B C 1A	C7402	A C 2B	C8021	B C 2B	D6107	B C 4A	L3013	A C 2B	Q6107	A C 4A	
C1626	B C 3B	C3517	A C 2B	C4344	B C 1A	C7403	A C 1B	C8022	B C 3B	D6108	A C 4A	L3501	A C 3C	Q7402	A C 2B	
C1627	B C 4C	C3518	A C 2B	C4345	B C 1B	C7404	A C 1B	C8043	B C 2A	D7401	A C 1B	L3502	A C 2B	Q7801	A C 2A	
C1628	B C 3B	C3519	A C 2B	C4346	B C 1B	C7405	A C 1B	C8044	B C 3A	D7801	A C 3A	L3503	A C 2B	Q7802	A C 3A	
C1632	B C 3C	C3520	A C 2B	C4347	B C 1B	C7406	A C 1B	C8045	B C 2A	D8001	B C 3B	L3504	A C 2B	Q7803	A C 3A	
C1633	B C 3C	C3521	A C 2B	C4348	B C 1B	C7407	A C 1B	C8046	B C 3A	D8401	A C 4B	L3505	A C 2C	Q7804	A C 2A	
C1635	B C 3B	C3522	A C 2B	C4349	B C 1A	C7408	A C 1B	C8049	B C 2B	L4201	B C 1A	L3701	B C 1A	Q7807	A C 3A	
C1641	B C 4C	C3523	A C 2B	C4350	B C 1A	C7411	A C 1C	C8050	B C 2B	L4301	B C 1A	L4202	B C 1A	Q8401	A C 4B	
C1642	B C 3C	C3524	A C 2B	C5501	A C 1A	C7413	A C 1B	C8051	B C 2B	FUSE			L4302	B C 4B	RESISTOR	
C1701	A C 4C	C3525	A C 2B	C5503	A C 1A	C7414	A C 1B	C8052	B C 2B	F6101	A C 4C	L4303	A C 2A	R1001	B C 2C	
C1702	A C 4C	C3526	A C 2C	C5504	A C 1A	C7415	A C 2B	C8053	B C 2B	F6102	A C 4C	L4304	B C 1A	R1002	A C 1C	
C2701	A C 4A	C3527	A C 2B	C5505	A C 1A	C7416	A C 2B	C8054	B C 3A	F6103	A C 4A	L4305	B C 3A	R1003	A C 2C	
C2907	A C 1B	C3701	B C 2A	C5506	A C 1A	C7417	A C 2B	C8064	B C 3B	IC			L4306	B C 1B	R1004	A C 2C
C3001	A C 4C	C3702	B C 2A	C5507	A C 1A	C7418	A C 2B	C8101	B C 3B	IC1001	B C 1C	L4307	B C 1B	R1005	A C 2C	
C3003	A C 4C	C3703	B C 2A	C5508	A C 1A	C7419	A C 2B	C8102	B C 2C	IC1002	B C 1C	L5501	A C 1A	R1006	A C 1C	
C3004	A C 4C	C														

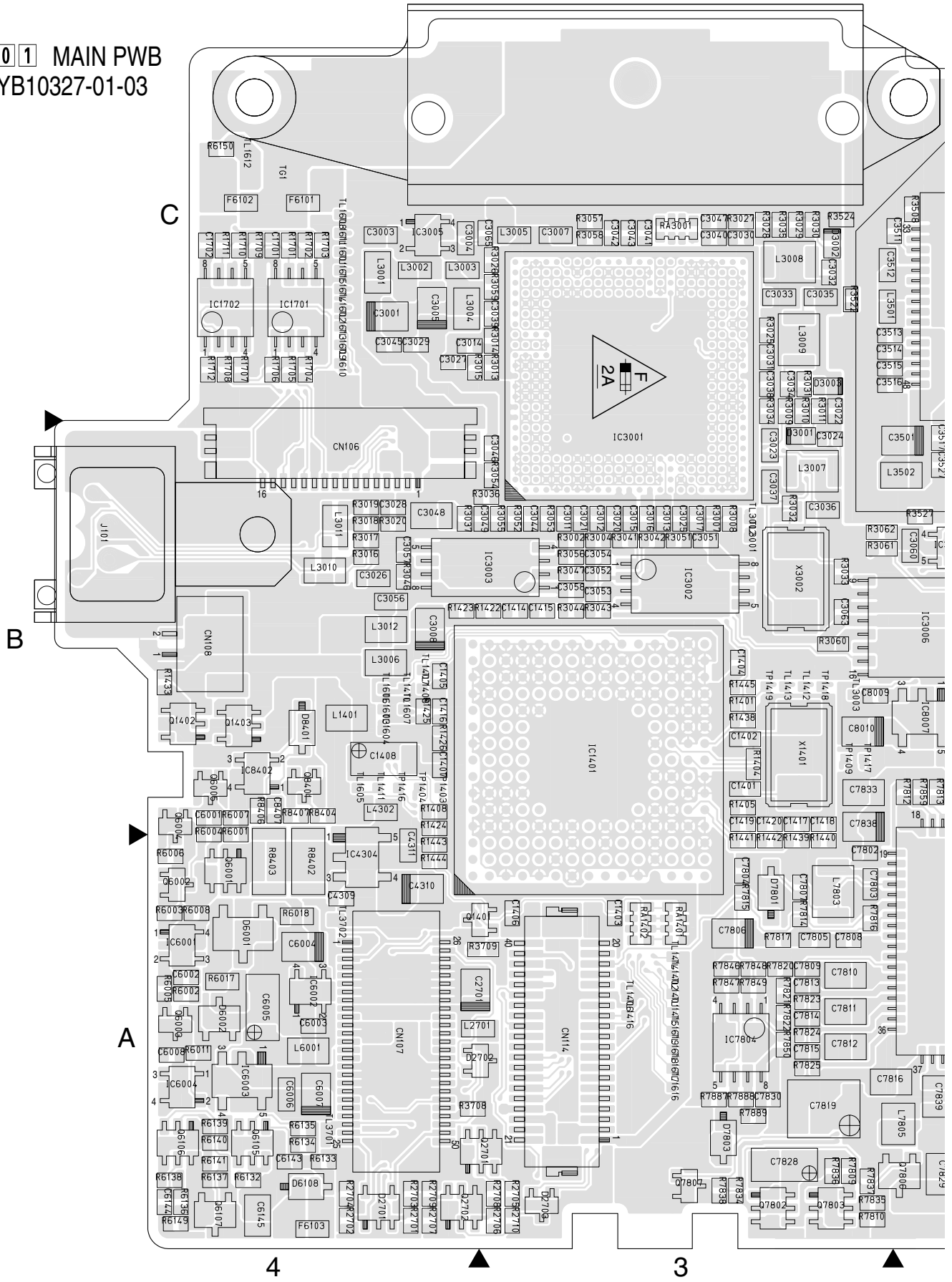
COMPONENT PARTS LOCATION GUIDE <<MAIN/YB10327-01-03>>

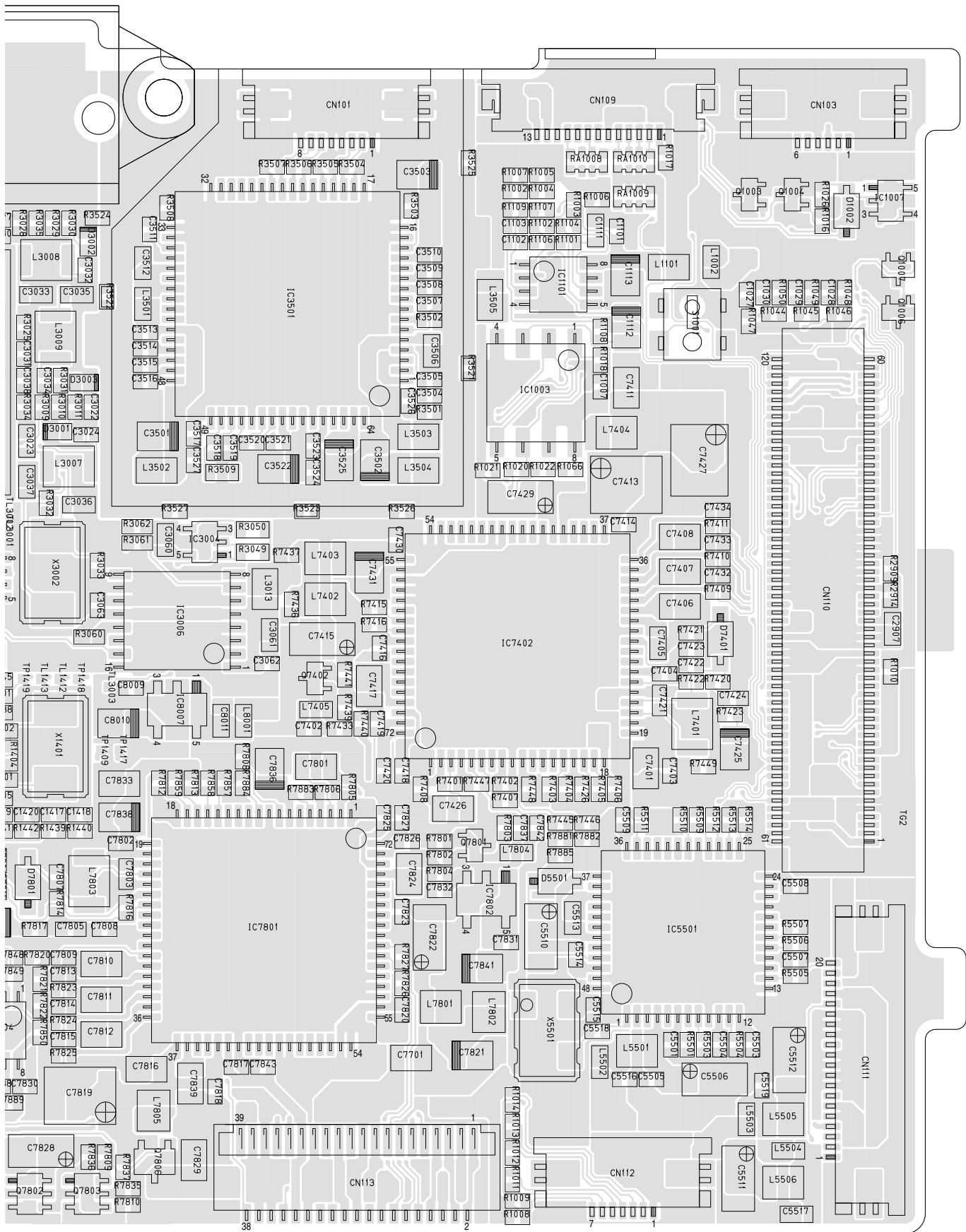
(2/2)

REF.NO.	LOCATION	REF.NO.	LOCATION	REF.NO.	LOCATION	REF.NO.	LOCATION	REF.NO.	LOCATION	REF.NO.	LOCATION	REF.NO.	LOCATION	REF.NO.	LOCATION
R1017	A C 1C	R1634	B C 3B	R3062	A C 3B	R5509	A C 1B	R7423	A C 1B	R8036	B C 2B	RA8401	B C 3A	TL8102	B C 3C
R1018	A C 1C	R1635	B C 3C	R3501	A C 2C	R5510	A C 1B	R7426	A C 1B	R8037	B C 2B	RA8402	B C 3A	TL8104	B C 3C
R1020	A C 2B	R1636	B C 3C	R3502	A C 2C	R5511	A C 1B	R7433	A C 2B	R8038	B C 2B	RA8403	B C 3A	TL8105	B C 3C
R1021	A C 2B	R1637	B C 3C	R3503	A C 2C	R5512	A C 1B	R7436	A C 2B	R8040	B C 2B	RA8404	B C 3A	TL8106	B C 3C
R1022	A C 2B	R1638	B C 3B	R3504	A C 2C	R5513	A C 1B	R7437	A C 2B	R8046	B C 3B			TL8107	B C 3C
R1023	B C 1C	R1639	B C 3B	R3505	A C 2C	R5514	A C 1B	R7439	A C 2B	R8047	B C 2B			TL8108	B C 3C
R1024	B C 1C	R1640	B C 3B	R3506	A C 2C	R6001	A C 4A	R7440	A C 2B	R8049	B C 3B				A C 4C
R1025	B C 1C	R1641	B C 3B	R3507	A C 2C	R6002	A C 4A	R7441	A C 2B	R8050	B C 3A			TP1403	A C 4B
R1026	A C 1C	R1643	B C 4B	R3508	A C 2C	R6003	A C 4A	R7445	A C 1B	R8051	B C 3B			TP1404	A C 4B
R1029	B C 1C	R1644	B C 3B	R3509	A C 2B	R6004	A C 4A	R7446	A C 1B	R8052	B C 2B			TP1409	A C 3B
R1030	B C 1C	R1646	B C 3B	R3521	A C 2C	R6005	A C 4A	R7447	A C 2B	R8053	B C 3B			TP1416	A C 4B
R1037	B C 1C	R1701	A C 4C	R3522	A C 3C	R6006	A C 4A	R7448	A C 2B	R8054	B C 3B			TP1417	A C 3B
R1039	B C 1C	R1702	A C 4C	R3523	A C 2B	R6007	A C 4B	R7449	A C 1B	R8055	B C 3B			TP1418	A C 3B
R1044	A C 1C	R1703	A C 4C	R3524	A C 3C	R6008	A C 4A	R7801	A C 2A	R8101	B C 2C			TP1419	A C 3B
R1045	A C 1C	R1704	A C 4C	R3525	A C 2C	R6011	A C 4A	R7802	A C 2A	R8102	B C 2C			X1001	B C 1C
R1046	A C 1C	R1705	A C 4C	R3526	A C 2B	R6012	B C 3C	R7803	A C 2A	R8104	B C 2C			X1002	B C 1C
R1047	A C 1C	R1706	A C 4C	R3527	A C 2B	R6013	B C 3C	R7804	A C 2A	R8105	B C 2C			X1401	A C 3B
R1048	A C 1C	R1707	A C 4C	R3701	B C 2A	R6017	A C 4A	R7805	A C 2B	R8106	B C 2C			X3002	A C 3B
R1049	A C 1C	R1708	A C 4C	R3702	B C 2A	R6018	A C 4A	R7806	A C 2B	R8107	B C 2C			X5501	A C 2A
R1050	A C 1C	R1709	A C 4C	R3703	B C 2A	R6101	B C 4B	R7808	A C 2B	R8108	B C 2C			X8002	B C 2B
R1051	B C 1C	R1710	A C 4C	R3704	B C 2A	R6102	B C 4B	R7809	A C 3A	R8109	B C 2C			X8101	B C 2C
R1052	B C 1C	R1711	A C 4C	R3705	B C 2A	R6103	B C 4B	R7810	A C 3A	R8110	B C 2C			X8401	B C 3B
R1053	B C 1C	R1712	A C 4C	R3706	B C 2A	R6104	B C 4B	R7812	A C 2B	R8111	B C 3C				
R1054	B C 2C	R2701	A C 4A	R3707	B C 2A	R6105	B C 4B	R7813	A C 2B	R8112	B C 3C				
R1055	B C 1C	R2702	A C 4A	R3708	A C 4A	R6106	B C 4B	R7814	A C 3A	R8113	B C 2C				
R1056	B C 1C	R2703	A C 4A	R3709	A C 3A	R6107	B C 4B	R7815	A C 3A	R8114	B C 3C				
R1058	B C 1C	R2704	A C 4A	R3711	B C 2A	R6108	B C 4B	R7816	A C 3A	R8115	B C 2C				
R1060	B C 1C	R2705	A C 3A	R3712	B C 2A	R6109	B C 4B	R7817	A C 3A	R8116	B C 2C				
R1066	A C 1B	R2706	A C 3A	R3713	B C 2A	R6110	B C 4B	R7820	A C 3A	R8117	B C 2C				
R1071	B C 1C	R2707	A C 4A	R3714	B C 2A	R6111	B C 4B	R7821	A C 3A	R8118	B C 2C				
R1072	B C 1C	R2708	A C 3A	R3715	B C 2A	R6112	B C 4C	R7822	A C 3A	R8119	B C 2C				
R1101	A C 1C	R2709	A C 4A	R3716	B C 2A	R6113	B C 4C	R7823	A C 3A	R8120	B C 2C				
R1102	A C 2C	R2710	A C 3A	R4203	B C 1A	R6114	B C 4C	R7824	A C 3A	R8121	B C 2C				
R1104	A C 1C	R2909	A C 1B	R4204	B C 1A	R6115	B C 4C	R7825	A C 3A	R8122	B C 2C				
R1106	A C 2C	R2914	A C 1B	R4205	B C 1A	R6116	B C 4C	R7826	A C 2A	R8123	B C 2C				
R1107	A C 2C	R3002	A C 3B	R4206	B C 1A	R6117	B C 4C	R7827	A C 2A	R8124	B C 2C				
R1108	A C 1C	R3004	A C 3B	R4207	B C 1A	R6118	B C 4C	R7834	A C 3A	R8125	B C 2C				
R1109	A C 2C	R3007	A C 3B	R4208	B C 1A	R6119	B C 4C	R7835	A C 3A	R8126	B C 2C				
R1401	A C 3B	R3008	A C 3B	R4301	B C 1A	R6120	B C 4C	R7836	A C 3A	R8127	B C 2C				
R1404	A C 3B	R3009	A C 3C	R4302	B C 1B	R6121	B C 4C	R7837	A C 3A	R8128	B C 2C				
R1405	A C 3B	R3010	A C 3C	R4303	B C 1A	R6122	B C 4C	R7838	A C 3A	R8129	B C 2C				
R1408	A C 4B	R3011	A C 3C	R4304	B C 1A	R6123	B C 4C	R7846	A C 3A	R8130	B C 2C				
R1422	A C 3B	R3013	A C 3C	R4307	B C 1A	R6124	B C 4C	R7847	A C 3A	R8131	B C 2C				
R1423	A C 4B	R3014	A C 3C	R4308	B C 1A	R6125	B C 4C	R7848	A C 3A	R8132	B C 2C				
R1424	A C 4B	R3015	A C 4C	R4309	B C 2A	R6126	B C 4C	R7849	A C 3A	R8133	B C 2C				
R1425	A C 4B	R3016	A C 4B	R4310	B C 1A	R6127	B C 4C	R7850	A C 3A	R8134	B C 3C				
R1426	A C 4B	R3017	A C 4B	R4311	B C 1A	R6128	B C 4C	R7857	A C 2B	R8135	B C 2C				
R1433	A C 4B	R3018	A C 4B	R4312	B C 1A	R6129	B C 4C	R7858	A C 2B	R8136	B C 3B				
R1438	A C 3B	R3019	A C 4B	R4313	B C 1A	R6130	B C 4C	R7859	A C 2B	R8401	B C 3B				
R1439	A C 3A	R3020	A C 4B	R4314	B C 1A	R6131	B C 4C	R7881	A C 1A	R8402	A C 4A				
R1440	A C 3A	R3025	A C 3C	R4315	B C 1A	R6132	A C 4A	R7882	A C 1A	R8403	A C 4A				
R1441	A C 3A	R3026	A C 3C	R4316	B C 1A	R6133	A C 4A	R7883	A C 2B	R8404	A C 4B				
R1442	A C 3A	R3027	A C 3C	R4317	B C 1A	R6134	A C 4A	R7884	A C 2B	R8406	A C 4B				
R1443	A C 4A	R3028	A C 3C	R4318	B C 1A	R6135	A C 4A	R7885	A C 1A	R8407	A C 4B				
R1444	A C 4A	R3029	A C 3C	R4319	B C 1A	R6136	A C 4A	R7887	A C 3A	R8408	B C 3B				
R1445	A C 3B	R3030	A C 3C	R4320	B C 1A	R6137	A C 4A	R7888	A C 3A	R8409	B C 3A				
R1601	B C 4B	R3031	A C 3C	R4321	B C 1A	R6138	A C 4A	R7889	A C 3A	R8410	B C 3B				
R1602	B C 4B	R3032	A C 3B	R4322	B C 1B	R6139	A C 4A	R8001	B C 3B	R8411	B C 3B				
R1603	B C 4B	R3033	A C 3B	R4323	B C 1B	R6140	A C 4A	R8002	B C 2B	R8412	B C 3B				
R1604	B C 4B	R3034	A C 3C	R4324	B C 1B	R6141	A C 4A	R8004	B C 2B	R8413	B C 3B				
R1605	B C 3C	R3035	A C 3C	R4325	B C 1A	R6144	B C 4C	R8006	B C 2B	R8414	B C 3B				
R1606	B C 3B	R3036	A C 3B	R4326	B C 1A	R6145	B C 4C	R8007	B C 2B	R8415	B C 3B				
R1609	B C 3C	R3037	A C 4B	R4327	B C 1A	R6146	B C 4C	R8008	B C 2B	R8416	B C 3B				
R1610	B C 4C	R3041	A C 3B	R4328	B C 1A	R6147	B C 4C	R8009	B C 2B	RA1008	A C 1C				
R1611	B C 4C	R3042	A C 3B	R4329	B C 1A	R6148	B C 4C	R8010	B C 2B	RA1009	A C 1C				
R1612	B C 3B	R3043	A C 3B	R4330	B C 1A	R6149	A C 4A	R8011	B C 2B	RA1010	A C 1C				
R1613	B C 3B	R3044	A C 3B	R4331	B C 1A	R6150	A C 4A	R8014	B C 2B	RA1401	A C 3A				
R1614	B C 3B	R3045	B C 4B	R4332	B C 1A	R7401	A C 2B	R8015	B C 2B	RA1402	A C 3A				
R1615	B C 3B	R3046	A C 4B	R4333	B C 1B	R7402	A C 2B	R8017	B C 2B	RA3001	A C 3C				
R1616	B C 3B	R3047	A C 3B	R4334	B C 1B	R7403	A C 2B	R8020	B C 2B	RA4301	B C 2A				
R1617	B C 3B	R3049	A C 2B	R4335	B C 1B	R7404	A C 1B	R8021	B C 2B	RA4302	B C 2A				
R1618	B C 3B	R3050	A C 2B	R4336	B C 1B	R7405	A C 1B	R8022	B C 2B	RA4303	B C 2A				
R1619	B C 3B	R3051	A C 3B	R4338	B C 1A	R7406	A C 1B	R8023	B C 2B	RA4304	B C 2A				
R1620	B C 4B	R3052	A C 3B	R4340	B C 1B	R7407	A C 2B	R8025	B C 2B	RA4305	B C 2A				
R1621	B C 4B	R3053	A C 3B	R4341	B C 1B	R7408	A C 2B	R8026	B C 2B	RA4306	B C 2A				
R1622	B C 3B	R3054	A C 3B	R4342	B C 1B	R7409	A C 1B	R8027	B C 2B	RA4307	B C 2B				
R1624	B C 4C	R3055	A C 3B	R4343	B C 1B	R7410	A C 1B	R8028	B C 2B	RA4308	B C 2B				
R1628	B C 4B	R3056	A C 3B	R5501	A C 1A	R7411	A C 1B	R8029	B C 2B	RA4309	B C 2A				
R1629	B C 4B	R3057	A C 3C	R5503	A C 1A	R7415	A C 2B	R8030	B C 3A	RA4310	B C 2A				
R1630	B C 3B	R3058	A C 3C	R5504	A C 1A	R7416	A C 2B	R8032	B C 2B	RA8001	B C 2B				
R1631	B C 3B	R3059	A C 3C	R5505	A C 1A	R7420	A C 1B	R8033	B C 2B	RA8002	B C 2B				
R1632	B C 4B	R3060	A C 3B	R5506	A C 1A	R7421	A C 1B	R8034	B C 3A	RA8003	B C 2B				
R1633	B C 4C	R3061	A C 3B	R5507	A C 1A	R7422	A C 1B	R8035	B C 3A	RA8004	B C 2B				

COMPONENT SIDE(A)

01 MAIN PWB
YB10327-01-03

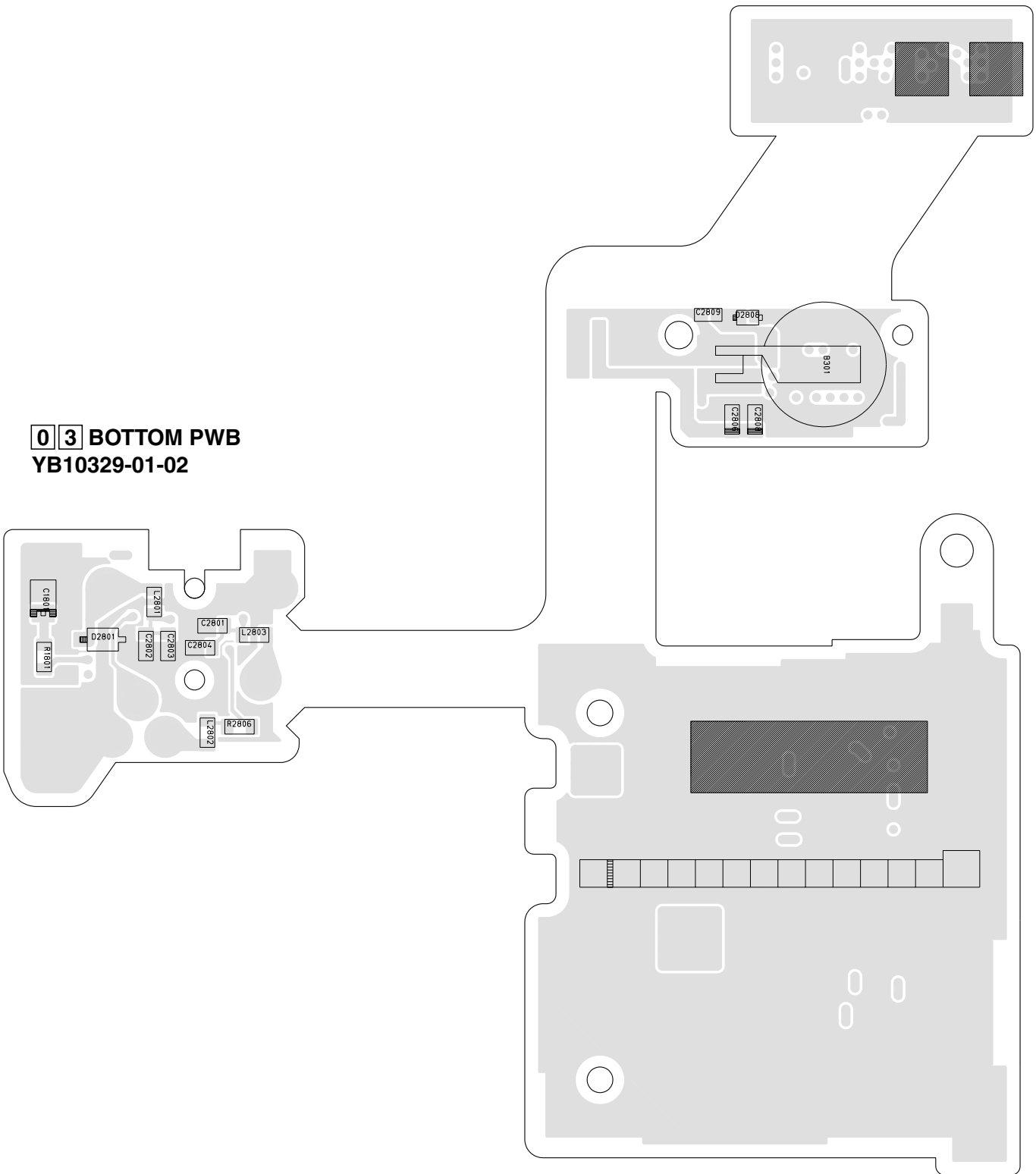




4.5 BOTTOM CIRCUIT BOARD

FOIL SIDE(B)

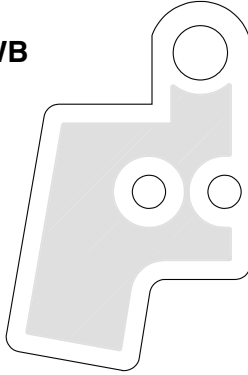
0 3 BOTTOM PWB
YB10329-01-02



4.6 EJECT CIRCUIT BOARD

FOIL SIDE(B)

06 EJECT PWB
YB10329-01-02



COMPONENT SIDE(A)

06 EJECT PWB
YB10329-01-02

